

OPTIONS

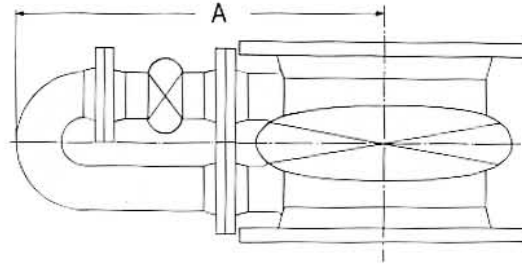
By-Pass

The installation of a BY-PASS permits the line medium to pass around the main valve in a controlled amount. This is sometimes desirable as it eases operation of the main valve and greatly reduces possible damage due to water hammer.

BY-PASS is mounted on the main valve with the spindle in a parallel position (see illustration).

Other arrangements on special request.

Unless otherwise specified BY-PASS valves are supplied in accordance with the main valve (eg.



a N.R.S. main valve is equipped with a N.R.S. BY-PASS valve while an OS & Y main valve is equipped with an OS & Y BY-PASS valve.)

NOTE: LOCATION OF BY-PASS (SIDE OF VALVE IS STANDARD; BOTTOM OF VALVE - OPTIONAL) TO BE ADVISED AT TIME OF ORDER.

Size (mm)	400	450	500	600	750	900	1000	1200	1400
Size (in.)	16"	18"	20"	24"	30"	36"	42"	48"	54"
A (mm)	700	720	750	890	980	1220	1295	1525	1625
A (in.)	27½	28¼	29½	35	38½	48	51	60	64
B	3"	3"	3"	4"	4"	6"	6"	8"	8"

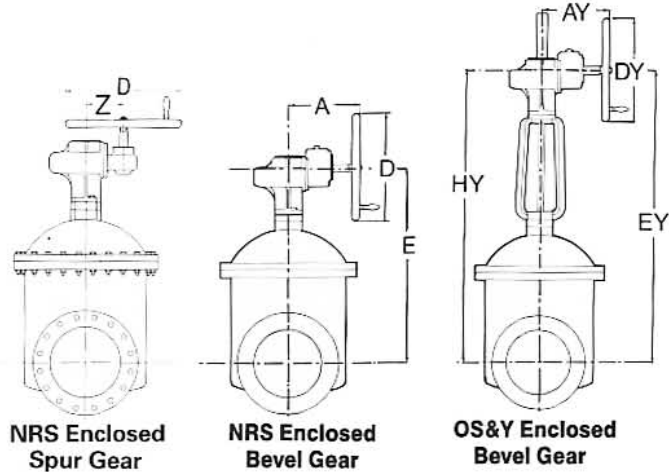
NOTE: B = BY-PASS VALVE SIZE

Manual Gear Operation

Manual Gear Operation is recommended on larger size valves, especially at elevated pressures.

The Seguro Gear Operator illustrated can be combined with extension stem, operating gear brackets and floorstands if desired, as well as right angle drive.

All Operators can easily be mounted in the field on N.R.S. valves already in service.



NRS Enclosed Spur Gear

NRS Enclosed Bevel Gear

OS&Y Enclosed Bevel Gear

Size (mm)	350	400	450	500	600	750	900	1000	1200	1400
A	222	222	250	250	280	350	350	405	405	470
D	400	400	500	500	640	640	640	800	800	900
E	795	920	990	1070	1215	1835	2045	2515	2820	3150
AY	222	222	250	250	280	350	350	405	405	470
Z	132	132	132	157	157	184	184	212	212	-
EY	1227	1405	1520	1760	1900	2795	3060	3710	4140	4545
NTB*	186	210	234	252	264	291	309	360	372	420
NTS**	279	315	351	462	484	543	577	672	694	-

Size (in.)	14"	16"	18"	20"	24"	30"	36"	42"	48"	54"
A	8 ¾	8 ¾	9 7/8	9 7/8	11	13 ¾	13 ¾	16	16	18 ½
D	15 ¾	15 ¾	19 ¾	19 ¾	25 ¼	25 ¼	25 ¼	31 ½	31 ½	35 7/8
E	31 ¼	36 ¼	39	42 1/8	47 7/8	72 ¼	80 ½	99	111	124
AY	8 ¾	8 ¾	9 7/8	9 7/8	11	13 ¾	13 ¾	16	16	18 ½
Z	5 3/16	5 3/16	5 3/16	6 3/16	6 3/16	7 ¼	7 ¼	8 3/8	8 3/8	-
EY	48 3/8	55 ¼	59 7/8	69 ¼	74 3/8	110	120 ½	146	163	179
NTB*	186	210	234	252	264	291	309	360	372	420
NTS**	279	315	351	462	484	543	577	672	694	-

* NOTE: NTB - number of turns to open valve (enclosed bevel gear)

** NOTE: NTS - number of turns to open valve (enclosed spur gear)

Exclusive North American Distributors: NEO Valves, Toronto, Canada

SEGURO

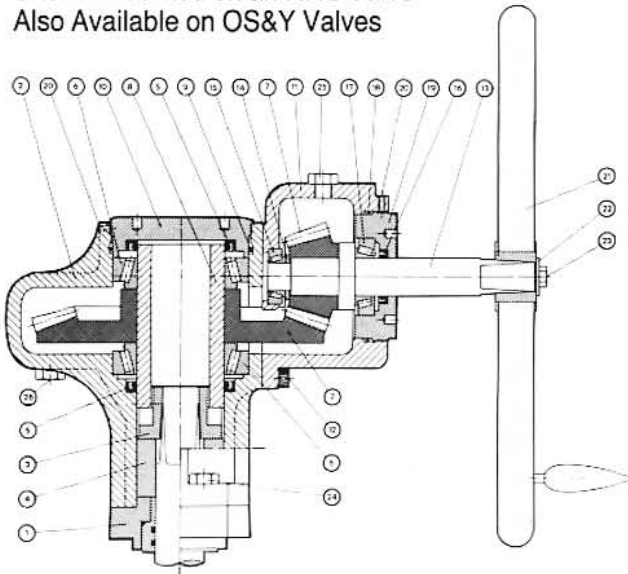
LARGE
RESILIENT
SEAL
GATE
VALVE



PARTS LIST

Enclosed Bevel Gear Operator

Shown Mounted on an NRS Valve
Also Available on OS&Y Valves

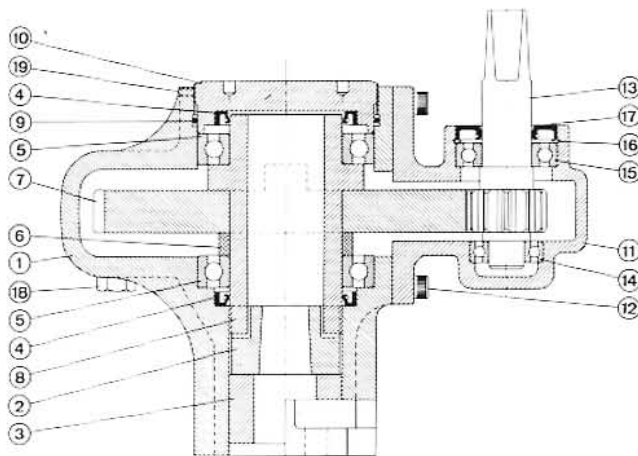


Standard Bevel Gear Ratio is 3:1.

Part No.	Part Name	Materials
1	O-Rings Piece	Cast Iron
2	Right-Angle Gear House	Cast Iron
3	Driving Cam	Cast Iron
4	Pilot Bushing	Nylon
5	Radial Sealing Ring	Rubber NBR
6	Taper Roller Bearing	Steel
7	Gear-Wheel	Steel
8	Shaft with Snap Coupoing	Steel
9	O-Ring	Rubber NBR
10	Bearing Cap	Steel
11	Cover	Cast Iron
12	Socket Screw	Stainless Steel
13	Pinion Shaft	Stainless Steel
14	Spacing Ring	Brass
15	Taper Roller Bearing	Steel
16	Radial Sealing Ring	Rubber NBR
17	Taper Roller Bearing	Steel
18	O-Ring	Rubber NBR
19	Bearing Cap	Steel
20	Pointed Screw	Steel
21	Handwheel	Cast Iron
22	Washer	Steel Hot Zinc
23	Hexagon - Headed Screw	Steel 8.8, Hot Zinc
24	Hexagon - Headed Screw	Steel 8.8, Hot Zinc

LARGE
RESILIENT
SEAL
GATE
VALVE

Enclosed Spur Gear Operator



Spur Gear Ratios
14", 16", 18" - 4.5:1
20", 24" - 5.5:1
Above 24" - 5.6:1

Part No.	Part Name	Materials
1	Gearhouse	Cast Iron
2	Driving cam	Ductile Iron
3	Pilot bushing	Nylon
4	Radial sealing ring	NBR
5	Ball bearing	Steel
6	Spacing ring	Steel
7	Gear-wheel	Steel
8	Shaft with snap coupling	Steel
9	O-ring	NBR
10	Bearing cap	Steel
11	Cover	Cast Iron
12	Setscrew	Steel
13	Shaft with gear wheel	Steel
14	Ball bearing	Steel
15	Ball bearing	Steel
16	Snap ring	Steel
17	Radial sealing ring	NBR
18	Oil plug	Steel
19	Pointed screw	Steel

SEGURO GATE VALVE 14"-60"

Standard Specification for Valves

Gate valves 14" and larger shall be manufactured and tested to meet or exceed the requirements of ANSI/AWWA C-509, latest revision.

The body of the valve shall be cast iron, with a full round port opening equal to or exceeding the diameter of the corresponding pipe. The body shall have integrally cast guides to insure the gate is properly guided through complete travel, and shall be free of pockets and bridges in the valve bottom.

The sealing mechanism shall consist of a free draining by-directional compression seating gate, which ensures a 100% bubble tight seal in the closed position against the line flow. The gate shall be constructed of a maintenance free rubber seal mechanically retained between two epoxy coated gate halves which are securely fastened with stainless steel recessed capscrews.

The valve stem shall be 300 or 400 series stainless steel and shall be independent of the bronze stem nut. A four bolt bonnet cover shall contain a grit and dust cap protecting two O-ring stem

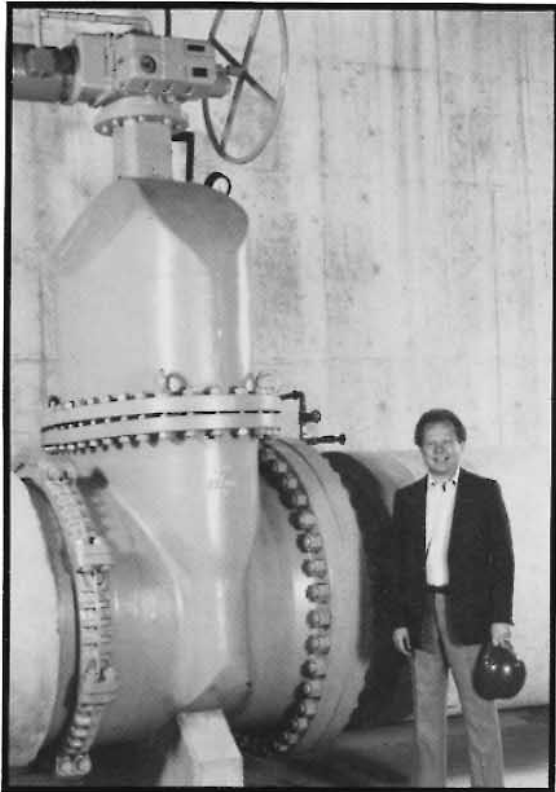
seals and the nylon bushing located above the stem collar. A teflon washer shall be located between the stem collar and bonnet as an anti-friction device.

All internal and external surfaces of the valve including the interior of the gate shall be coated with a two part epoxy coating suitable for potable water and in accordance with AWWA C550.

End connections shall be furnished to mate the connecting pipe. Mechanical joints are to be per ANSI/AWWA C111/A21.11; flanged joints shall conform to ANSI standard B16.1, Class 125 or 250; grooved joints shall be furnished in accordance with AWWA C606.

OS & Y, bevel gear, (handwheel or wrench nut), electric, pneumatic, or hydraulic cylinder actuators may be furnished in addition to non-rising stem operators to suit the specified service of the valve.

Gate valves shall be Seguro, or approved equal.



**48" SEGURO GATE VALVE,
Flanged x Victaulic, Class 250**

SEGURO

**LARGE
RESILIENT
SEAL
GATE
VALVE**

SEGURO

**LARGE
RESILIENT
SEAL
GATE
VALVE**

NEO Valves has been providing quality products and excellent service to Waterworks and Pollution Control industries since 1954.

We continue to be totally committed to these high standards in the years ahead.

EXCLUSIVE DISTRIBUTORS FOR NORTH AMERICA:



NEOVALVES

Division of EM Plastic &
Electric Products Limited

430 Norfinch Drive
Toronto, Ontario, Canada
M3N 1Y4
Tel.: (416) 661-6020
Fax: (416) 661-6787

YOUR NEAREST REPRESENTATIVE:

